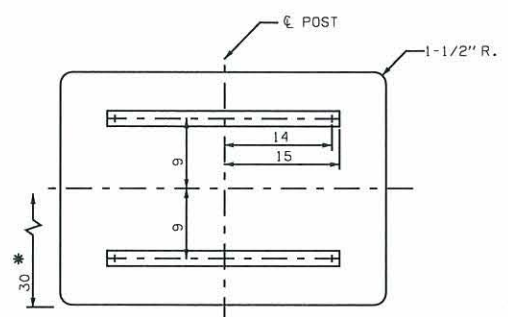
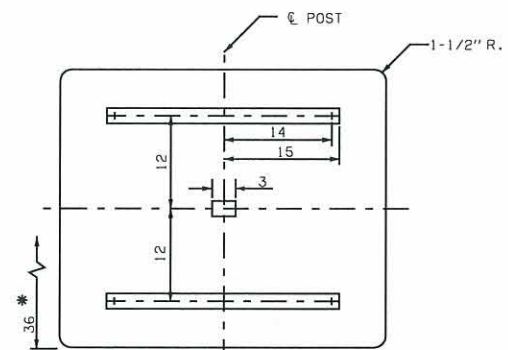


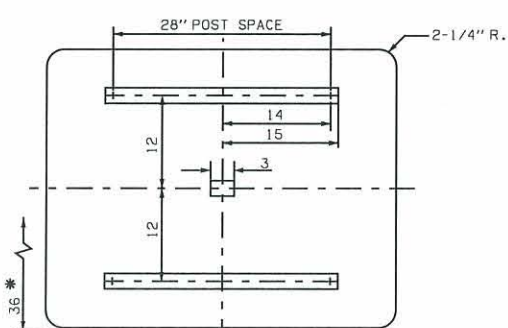
DESCRIPTION	REVISIONS	DATE



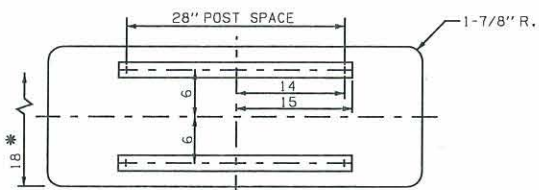
B-4230
 (1) 2" SQUARE TUBE POST
 (1) 2-1/2" PIPE POST



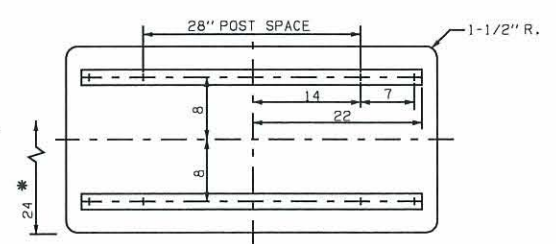
B-4236
 (1) 2" SQUARE TUBE POST
 (1) 2-1/2" PIPE POST



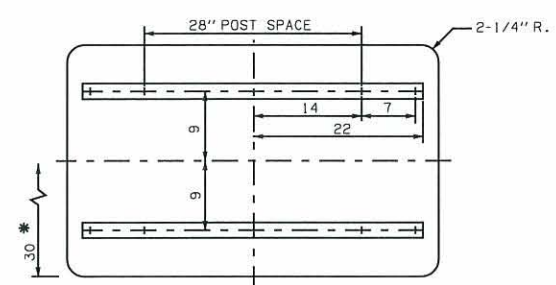
B-4536
 (2) 2" SQUARE TUBE POSTS
 (2) 2" PIPE POSTS



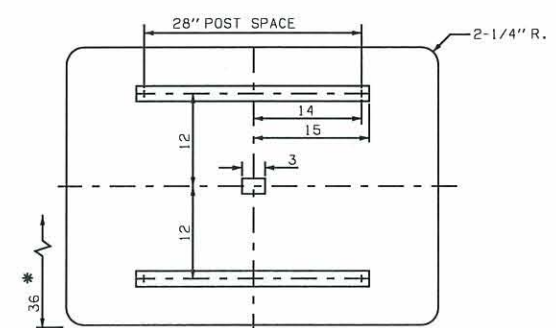
B-4818
 (2) 2" SQUARE TUBE POSTS
 (2) 1-1/2" PIPE POSTS



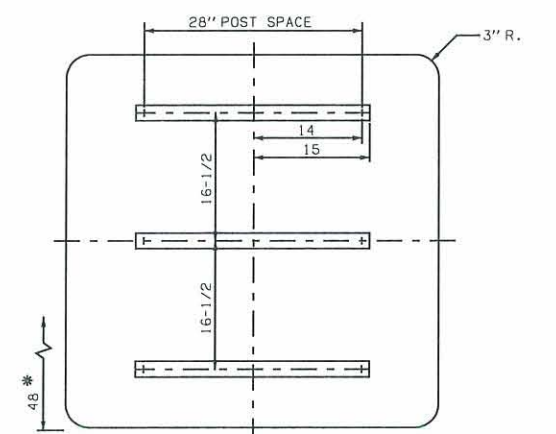
B-4824
 (2) 2" SQUARE TUBE POSTS
 (2) 2" PIPE POSTS



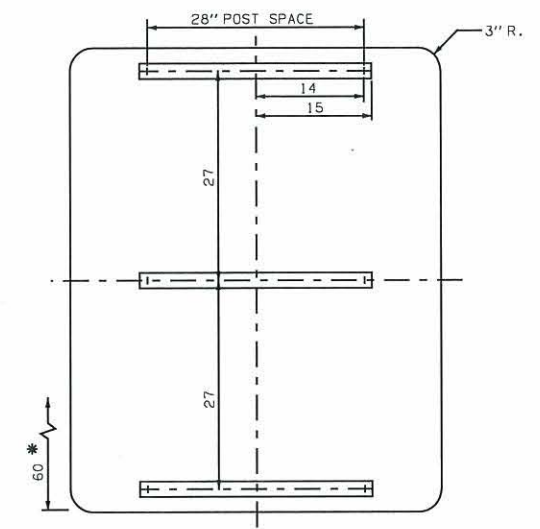
B-4830
 (2) 2" SQUARE TUBE POSTS
 (2) 2" PIPE POSTS



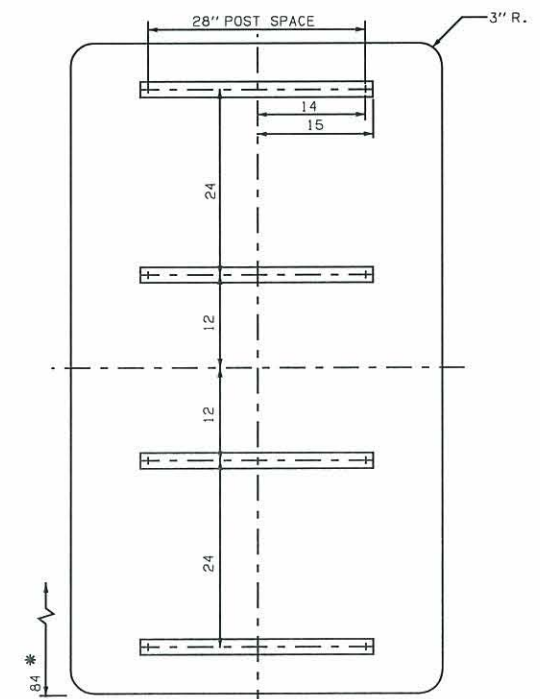
B-4836
 (2) 2" SQUARE TUBE POSTS
 (2) 2" PIPE POSTS



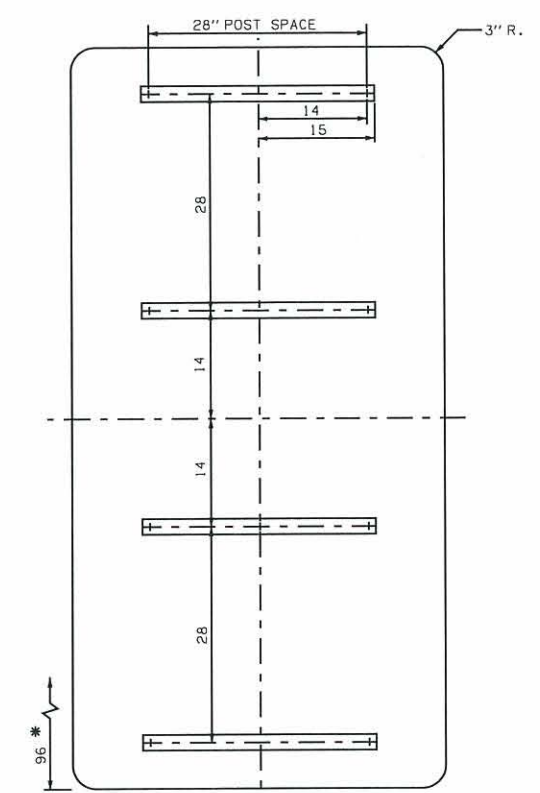
B-48(S)
 (2) 2" SQUARE TUBE POSTS
 (2) 2-1/2" PIPE POSTS



B-4860
 (2) 2-1/2" PIPE POSTS WITH SINGLE SIGN BLANK
 (2) 3-1/2" PIPE POSTS WHEN 2 SIGN BLANKS ARE USED IN A CLUSTER

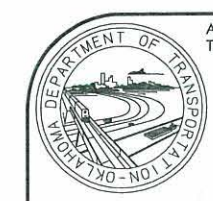


B-4884
 (2) 3" PIPE POSTS



B-4896
 (2) 3" PIPE POSTS

* ALL POSTS SHALL EXTEND 2" ABOVE THE TOP SIGN BRACKET, BUT NOT ABOVE THE TOP OF THE SIGN.
 ALL DIMENSIONS ARE IN INCHES UNLESS OTHERWISE SPECIFIED.



APPROVED BY
 TRAFFIC ENGINEER: *David Smith* DATE: *8/15/10*
 TRAFFIC STANDARD

SIGN BLANK AND BRACKET DETAILS